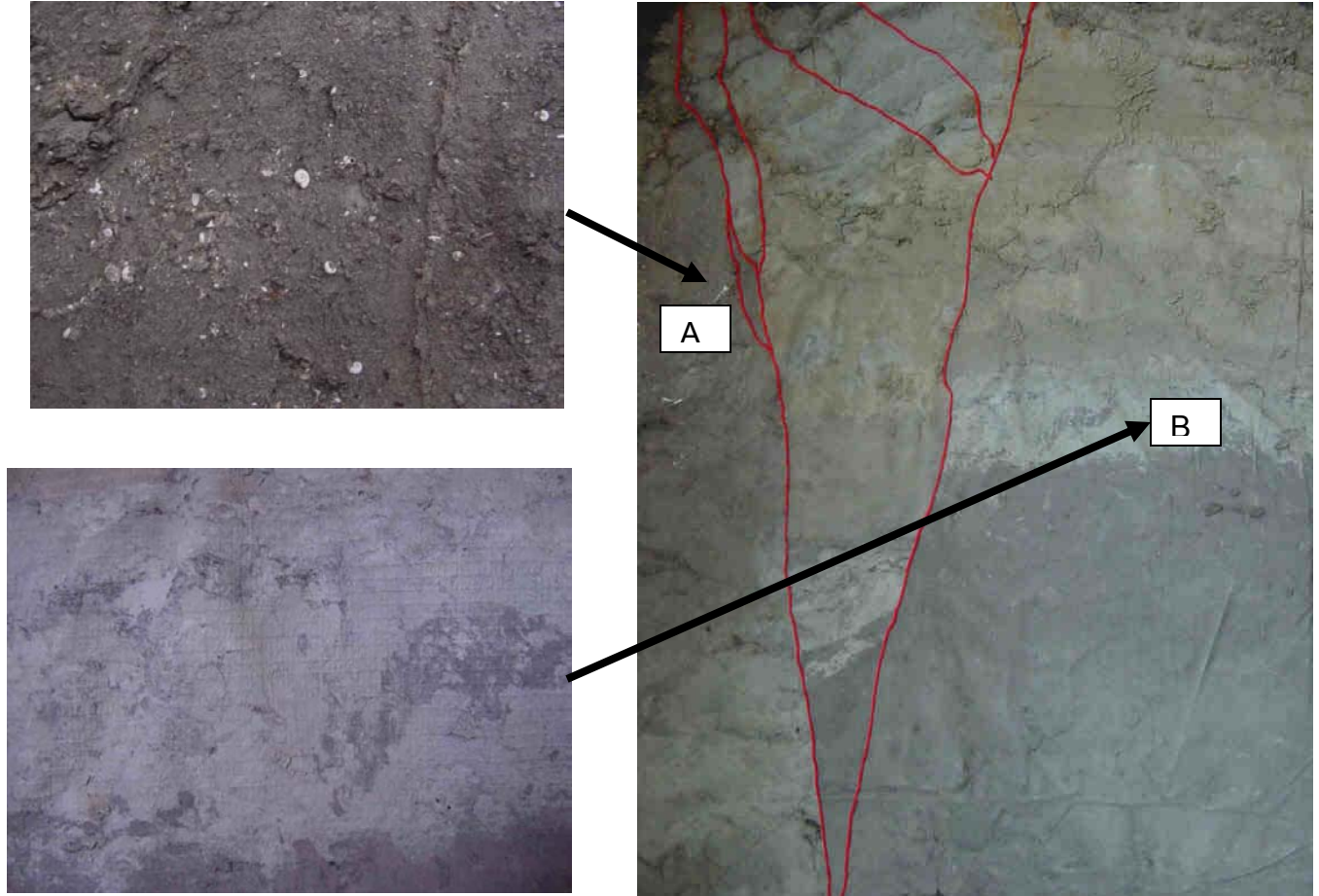
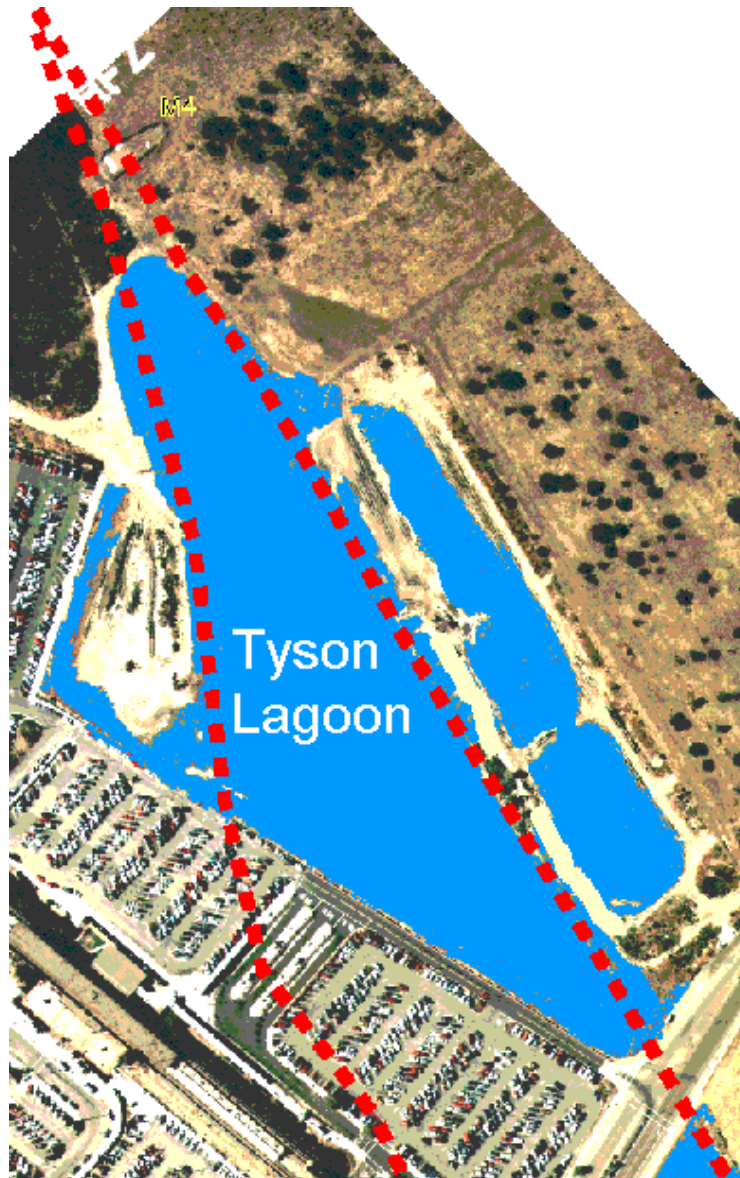


Faults at Tyson Lagoon

Tyson Lagoon was created by movement along the Hayward fault with evidence for at least 4000 years.



Above is a picture of a piece of a seismic trench. Look on the actual peel in the classroom and try and determine what events are reflected by A and B. Write the answer below.



The red dots are the trace of the Hayward Fault. When you go on the walk describe any evidence that might indicate a fault.