

FOR MORE INFORMATION ON THIS AREA
AND CLASSES VISIT OUR WEBSITE

Math/Science Nucleus
(510) 790-6284 <http://msnucleus.org>

Property owned by Alameda County Flood Control
District

Tule Ponds at Tyson Lagoon PLANT AND ANIMAL CHANGES

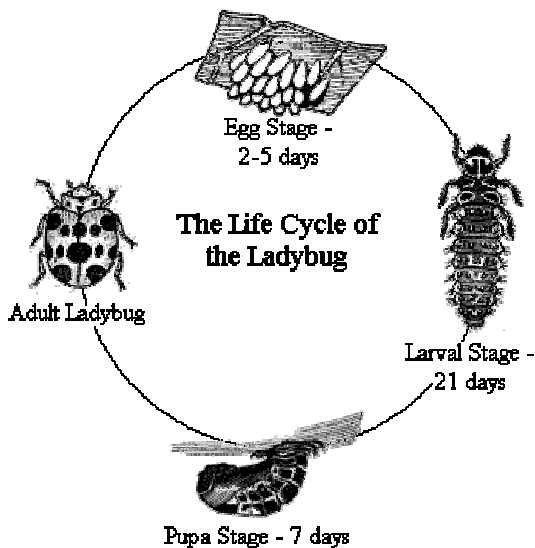


NAME _____

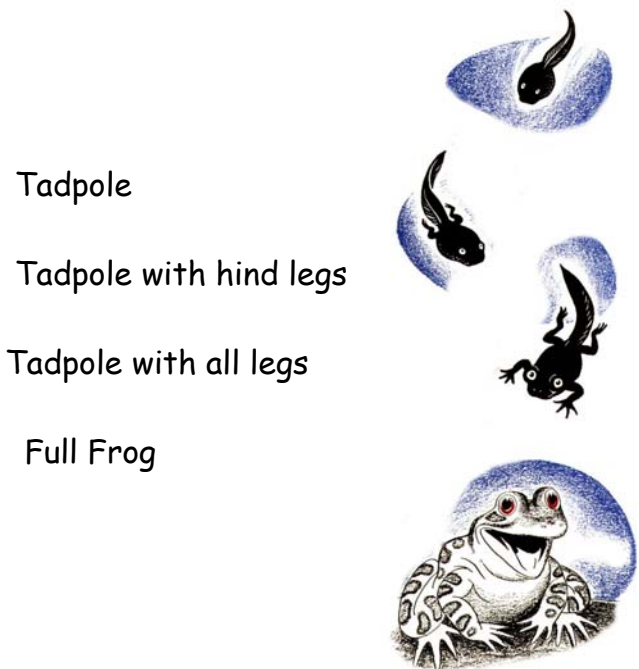
GUIDE: _____

LADYBUGS

Ladybugs live at Tyson Lagoon. They lay their eggs on willow trees. They eat aphids and help control the smaller insect population.



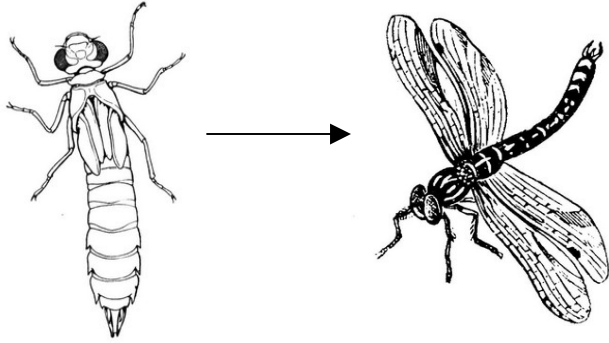
LIFE CYCLE OF THE FROG



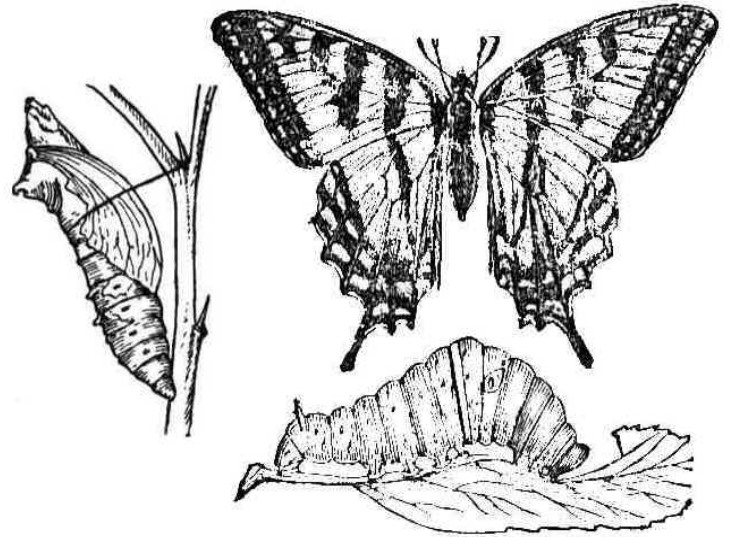
Depending on the species of frog will
depend on how long it takes to become a frog

Wetlands change with the seasons. Animals and plants that live in Tule Ponds and Tyson Lagoon must adapt to the area they live in and during the rainy (fall and winter) and dry (late spring, summer) seasons.

DRAGONFLY – nymph (water) to adult (land)



Butterflies change their form during their life cycle (metamorphosis). Label: Caterpillar, Chrysalis, and butterfly,



California Poppy

Eschscholzia californica is distinctive from other poppies because it has a rim on the receptacle below the petals. Flower color ranges from a uniform orange to various orange spots to deep yellow or golden petals. On December 12, 1890, the California State Floral Society voted to select the California Poppy as the State Flower.

*Poppies, golden poppies, gleaming in the sun.
Closing up at evening, when the day is done.
Pride of California, flower of our state.
Growing from the mountains to the Golden Gate.*

Label flower, sepal, petal, stamen, receptacle, seed pod, leaves, stem, taproot

