

## **Defining the Mission Creek Watershed**

### **QUESTIONS**

1. Describe a watershed in your own words
2. Give two examples of how factors can affect a watershed along its course.
3. On each map put an arrow that points to North.

### **La Costa Quadrangle Section A.**

4. In the southwest corner find Mt. Allison and label it. (hint: 2286')
5. Draw the trace of the Mission Creek headwater. Remember this continues onto the Niles Quadrangle.
6. Circle Bench Mark (BM) 533. What is a benchmark?
7. Circle the area of Haynes Gulch. What is a gulch and how do you know from the topography that this is a Gulch? (Hint: look at the contour lines.)
8. Draw a line on the trace of high power lines. (Hint: find the word "tower.")
9. Circle Leyden Creek. Is the water flowing in the same direction as Mission Creek or the opposite direction? How do you know?
10. Trace the line of the "Aqueduct." What is an aqueduct?

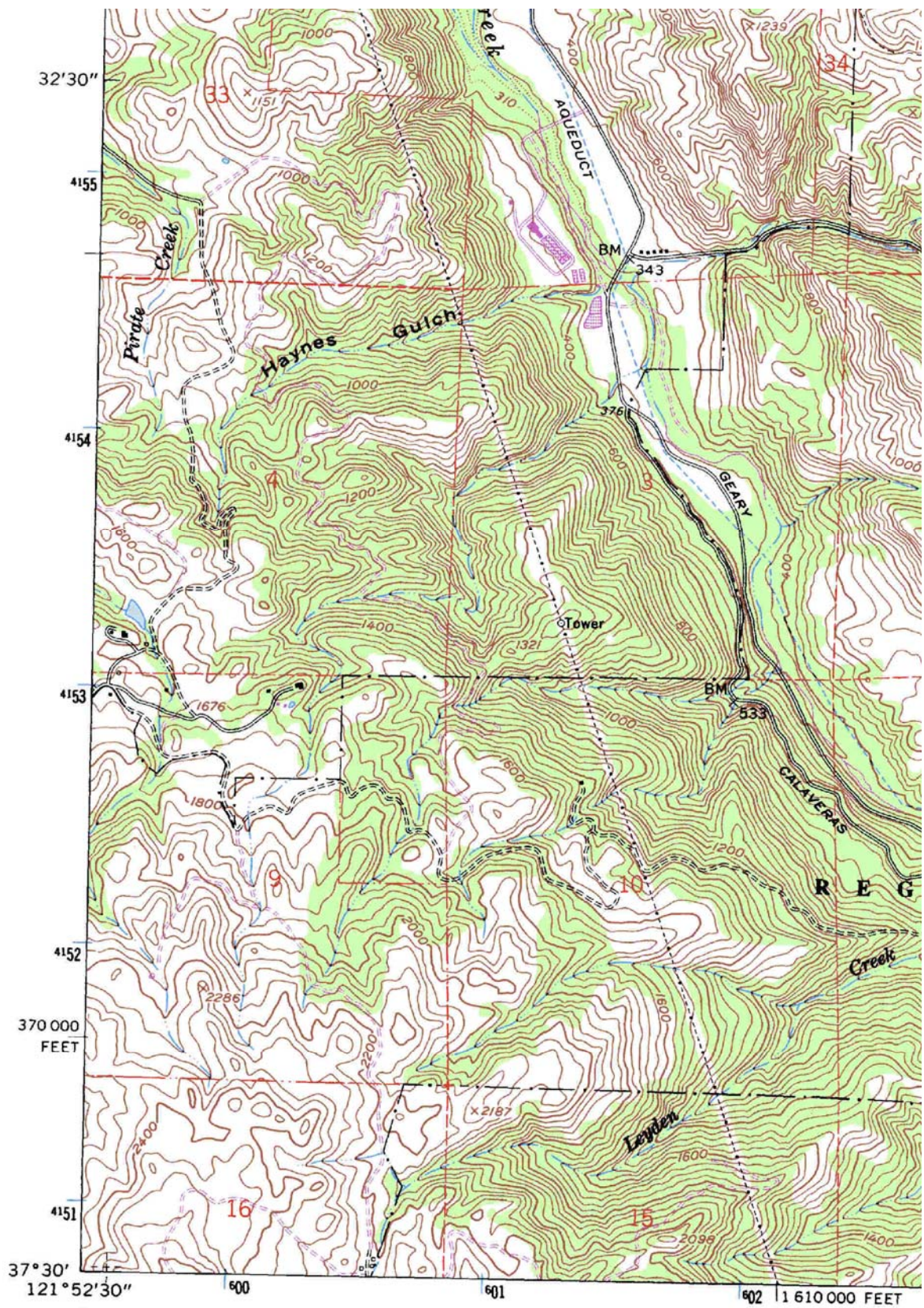
### **Niles Quadrangle Section B.**

11. Trace Mission Creek (hint: parallels Mill Creek Road in some places) to St. Joseph's School, near Mission Blvd.
12. Circle Mission Reservoir. What is this feature?
13. Circle Mission Peak? What is the altitude of Mission Peak?
14. Trace Aqua Caliente Creek. Is it flowing into Mission Creek? How do you know?

15. Trace the electricity lines. This power comes from generators near Yosemite. These lines help move the electricity to the city.
16. Is Mission Creek east or west of Mission Peak?
17. Circle Benchmark 192.
18. Trace the line of line that shows the city limits of Fremont.
19. Circle Warm Springs. Trace Aqua Caliente Creek. This area has warm water. Why?

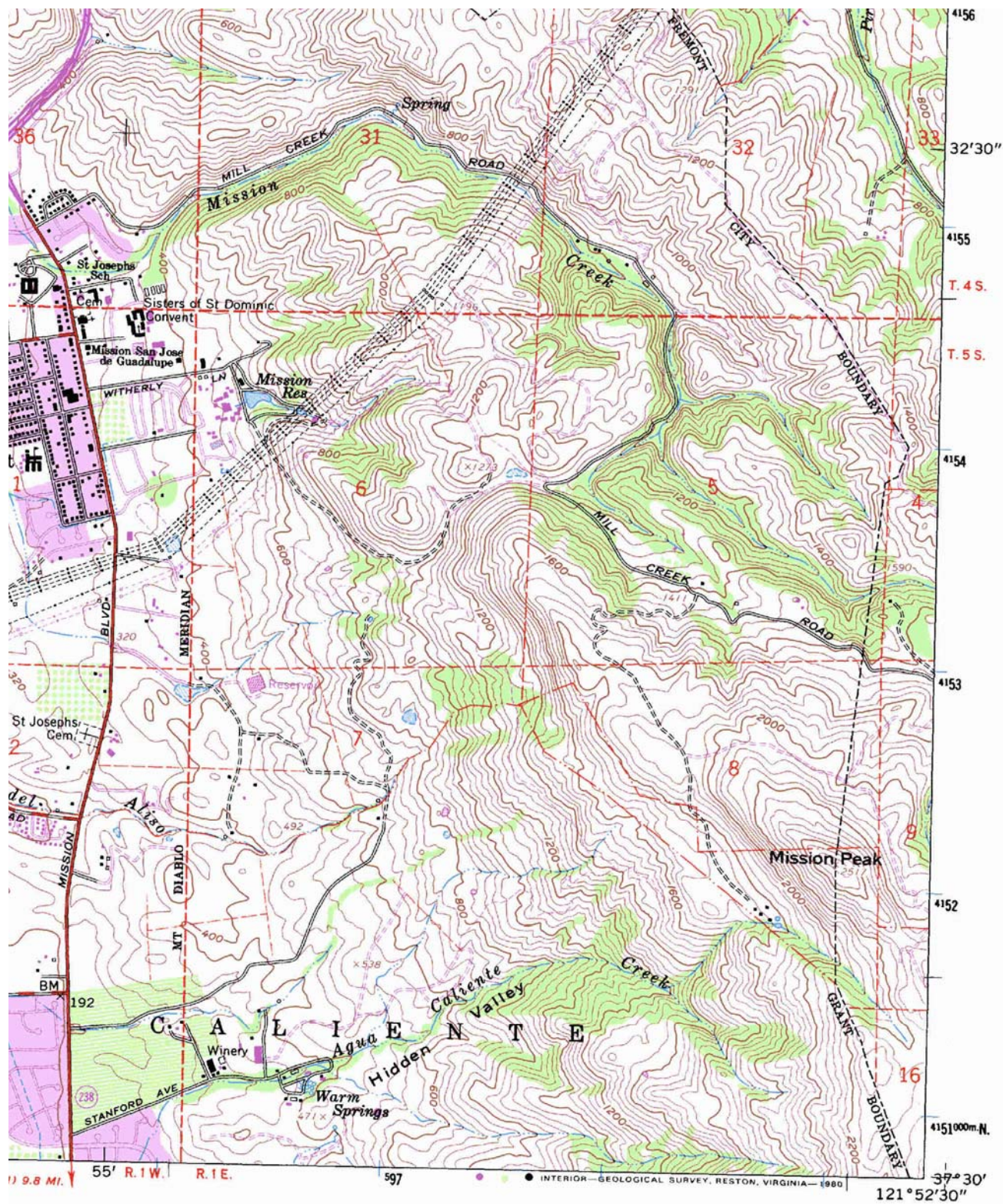
### **Niles Quadrangle Section C.**

20. Circle Stivers Lagoon and Lake Elizabeth.
21. Trace Mission Creek to Stivers Lagoon. Near Stivers it splits into 2 Creeks, Irvington and Laguna Creek. Trace the split into the two creeks.
22. Trace Vargas Creek. Where does it meet Mission Creek?
23. Circle Hopkins Junior High, Chadbourne Elementary, and Mission San Jose High School.
24. Gomes Elementary School is not written on the map but if you continue Mission Creek toward Lake Elizabeth you will see a large open area. Label that Gomes Elementary School.
24. Circle the Irvington Pumping Station. Trace a line of the double dashed lines. This is the trace of Hetch Hetchy water line that brings water from Yosemite area to San Francisco. Fremont uses some of this water in their drinking supply.
25. Circle Benchmark 70 and 93.
26. Trace the high voltage electricity lines (hint: double dashed lines with dots).



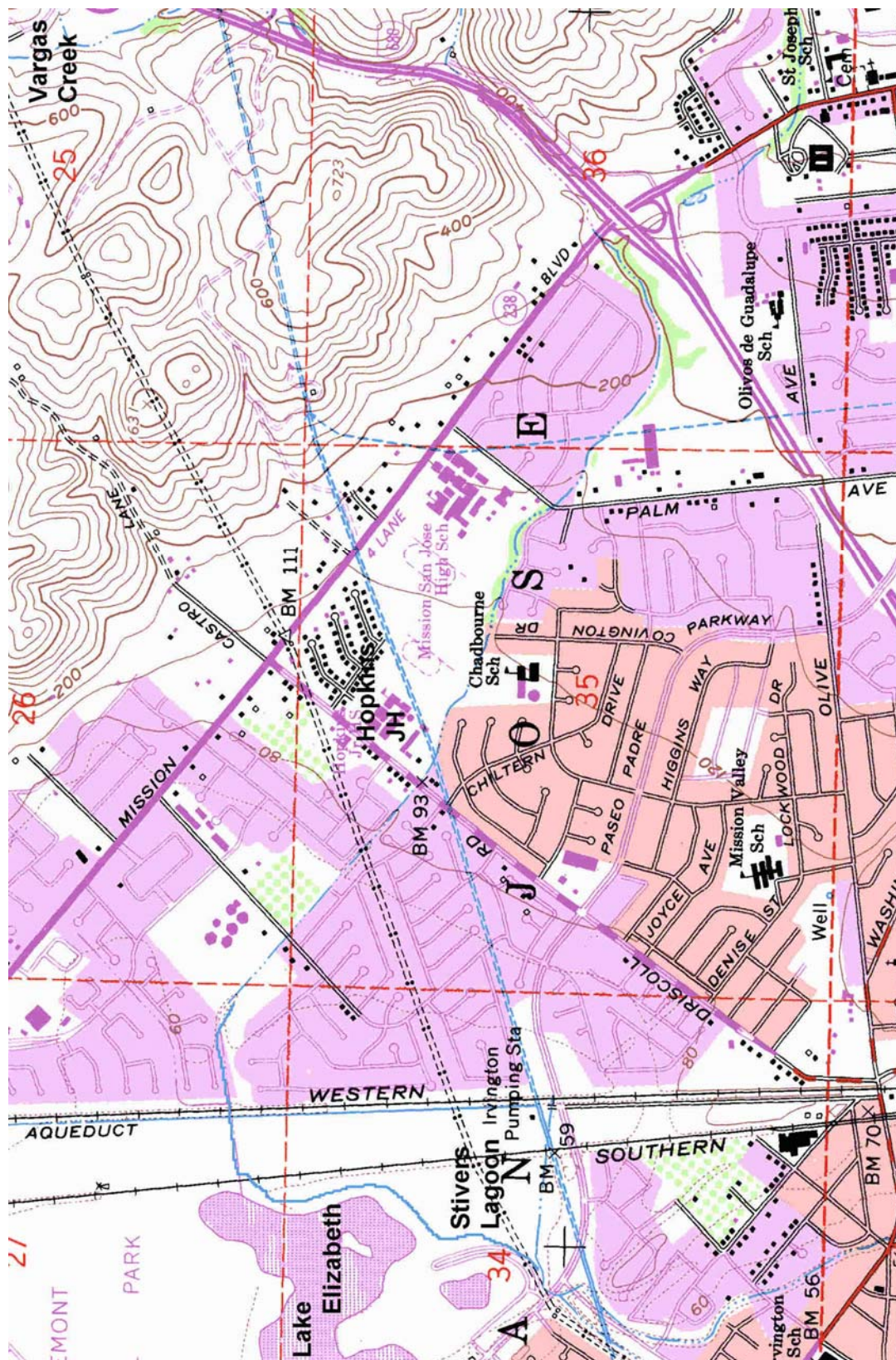
La Costa Quadrangle Section A (north is on top)





Niles Quadrangle Section B (north is on top)





**Niles Quadrangle Section C (north is to left)**