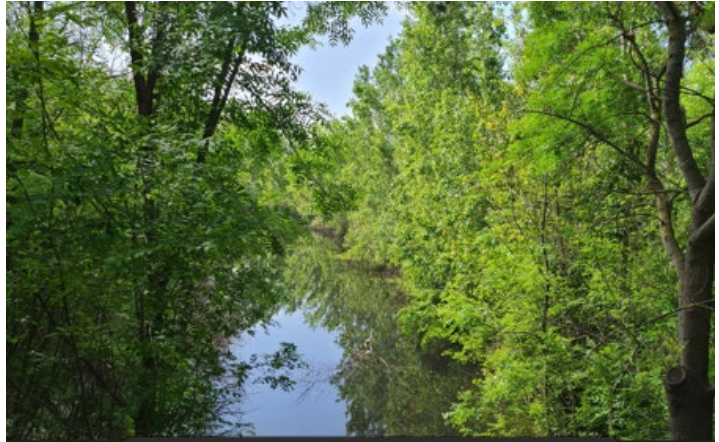


**Environmental
Educator/Scientist**

at Tule Ponds at Tyson Lagoon
Part or Full Time or contract
Math Science Nucleus
4074 Eggers Drive
Fremont, California 94536

Virtual tour:

<https://kuula.co/post/n1/collection/7vJ8j>



Math Science Nucleus is looking for a dynamic person who can not only teach K-6 science classes at Tule Ponds at Tyson Lagoon but can interact with high school and college students on community projects. The person needs to convey the excitement of environmental science to K-12 students and interact with our other environmental projects. Person introduces field trip in the classroom and interacts outside on this 17-acre wetland site. Includes native trees and other plants; Muwekma Ohlone hut and boat and more. Training on each program is usually done with master instructor. Should be proficient in communications skills through the internet (some field trips include virtual zoom meetings) and proficient in general computing (Word and some graphics).

Field trips for K-6 at Tule Ponds can be found at:

<https://www.ms-nucleus.org/classes/fieldtyson.htm>

Key Responsibilities:

The person in this position will teach K-6 field trips at Tule Ponds at Tyson Lagoon about 20 hours per week. Materials are already developed so teaching skills are important, but science content is also important. Person may also do after school classes of their choice, mainly for elementary grades. There are many opportunities to generate money, and we will be flexible to allow applicant to be creative, but to help bring in funds.

Tule Ponds is at the Fremont BART Station, so we get classes throughout Alameda County, so we service a diversity of children. The school of Blind and Deaf is also near our facility.

If interested in full time job, job would include working outdoors with native plants and helping to maintain area; coordinating Environmental Intern Program for High School Students during summer; yearly open house; helping with animals from butterflies to raccoons that live onsite. We also have ongoing observational programs that could be developed (citizen science type programs). We have greenhouse, irrigation for trees, a butterfly garden and more.

QUALIFICATIONS

- The ideal candidate would have minimum of B.S/B.A. in Biology, Geology, Chemistry or Environmental Science or similar with 2 years' experience either in teaching or environmental science type position (for higher salary). Retired scientists or graduate students are encouraged to apply, especially to teach morning field trips.
- Excellent teaching, communication and leadership skills are a must. Outdoor voice is a must.
- Be comfortable, enthusiastic, and technically accurate giving tours, and classes. Applicant will be trained on scientific content.
- Need to be comfortable speaking to groups of children and adults. Able to communicate to either group in a way that is engaging and interesting.
- Basic computer skills to use online slideshows and storybooks
- Experience using power equipment, including tractors (can train with right applicant)
- Valid California Driving license

COMPENSATION

- Beginning hourly wage is \$20.00 (\$41,600.00), depending on experience and education (will train how to teach). Higher education and experience starts at (\$25-\$40) Part time rate is negotiable.
- Benefits are negotiable after 3 month probationary period
- Growth potential to develop new classes and events including running Upper-level intern program for high school students and supervising eagle projects.
- Ability to write grants and secure to fund education, will result in rapid increase of salary and benefits

ADDITIONAL INFORMATION:

The Math/Science Nucleus is a non-profit, educational, and research organization composed of scientists, educators, and community members. It serves as a science resource center to assist school districts, teachers, administrators, and community.

Position could be part time (mornings only to teach field trips) to full time. If full time days would be Tuesday to Sat. Sat is usually overseeing volunteers with other staff members.

TO APPLY or for more information (please look at website for an insight into our organization) **If you have questions, please email.** Send resume and 2 email references (who can comment on your science or work skills) to Dr.

Joyce Blueford

Math Science Nucleus

4074 Eggers Drive Fremont, CA 94536 (510) 790-6284

<http://msnucleus.org> E-mail : blueford@msnucleus.org

EQUAL OPPORTUNITY EMPLOYER